



LANDSCAPE
CONSERVATION
COOPERATIVES

Conservation in Action

WHO WE ARE



Great Northern Landscape Conservation Cooperative

The Great Northern LCC (GNLCC) encompasses a bi-national North American landscape covering nearly 300 million acres. This landscape spans interior British Columbia and portions of Alberta in Canada, and extends from eastern Washington and northeastern Oregon across north and central Idaho into western Montana and Wyoming.

How We're Funded

The GNLCC receives the majority of its funding from the U.S. Fish & Wildlife Service, with other contributions from the U.S. Geological Survey, National Park Service and over 30 partner organizations from the Steering Committee, Advisory Team, and Partner Forums.

IN OUR PARTNERS' WORDS

“The Arid Lands Initiative is a great example of the LCC model in action. Partners are collaborating, making excellent use of science and technology, and identifying priority conservation landscapes in the Pacific Northwest. The initiative has received great support from the GNLCC which has been instrumental in its success.

—JOHN PIERCE, WASHINGTON DEPARTMENT OF FISH and WILDLIFE

KEY PARTNERS



WASHINGTON STATE DEPARTMENT OF
Natural Resources



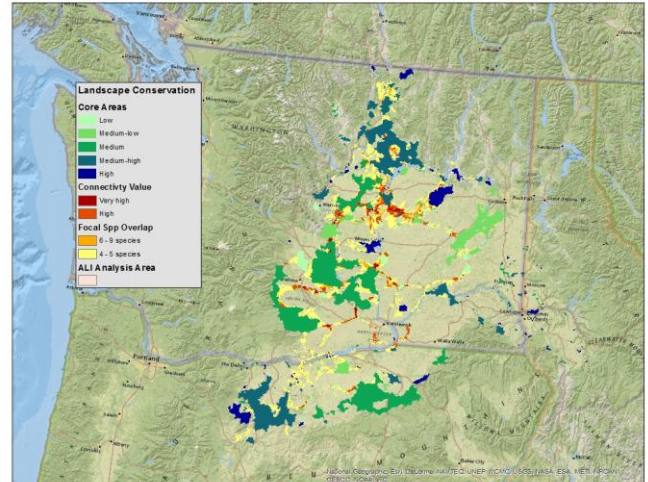
Washington
Department of
**FISH and
WILDLIFE**



Protecting nature. Preserving life.™

SCIENCE-DRIVEN RESULTS

Arid Lands Initiative



This map represents the shared priority areas of the collaborative partnership for the Arid Lands Initiative.

The vision for the Arid Land Initiative (ALI) is to bring together a diverse assemblage of public, private, and tribal interests working together to conserve and restore a viable, well connected system of the mid-Columbia basin’s arid lands and related freshwater habitats. The initiative also works to sustain native plant and animal communities and support local communities and compatible economic development. The Great Northern LCC has been instrumental in the facilitation and inspiration to help partners work across boundaries.

Following agreement on a shared strategy and focal conservation targets (shrub steppe, dunes, wetlands, cliffs and talus, WA ground squirrel, and greater sage-grouse) ALI partners modeled multiple scenarios, in a landscape conservation design, to identify key places in the basin needed to sustain healthy, connected levels of the focal targets. Maps and analysis results set the stage for highly coordinated conservation action, and ALI provides the forum for effective implementation.

MORE INFORMATION

Add additional information can be found online at <http://www.greatnorthernlcc.org/>.

Contact: Sonia Hall, hallsoniawild@gmail.com